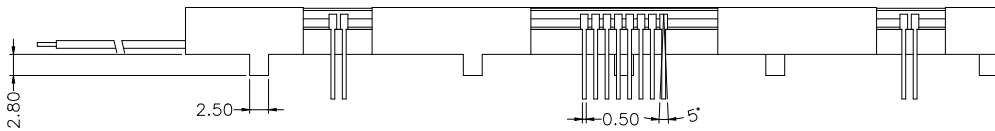
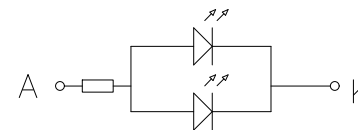
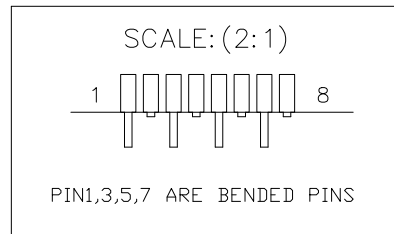


↑
VIEWING DIRECTION



PIN NO	SYMBOL	FUNCTION
1	VLCD	Input voltage for LCD
2	VSS	Ground
3	OSC	Oscillator input
4	VDD	Supply voltage for logic
5	CLK	External clock input
6	/SYN	Cascade synchronizatin input/output
7	SCL	Serial clock input
8	SDA	Serial data input
9~16	NC	No connect
17	A	Supply voltage for backlight(+VE)
18	K	Supply voltage for backlight(-VE)



- NOTES:
1. DISPLAY TYPE:
 2. VIEWING DIRECTION:
 3. POLARIZER TYPE:
 4. Driver IC:
 5. OPERATING TEMPERATURE:
 6. STORAGE TEMPERATURE:
 7. DRIVE MODE:
 8. LCD OPERATING VOLTAGE:
 9. CONNECTOR:
 10. INTERFACE:
 11. BACKLIGHT:
 12. CUSTOMER NO:
 13. REQUIREMENT ON ENVIRONM