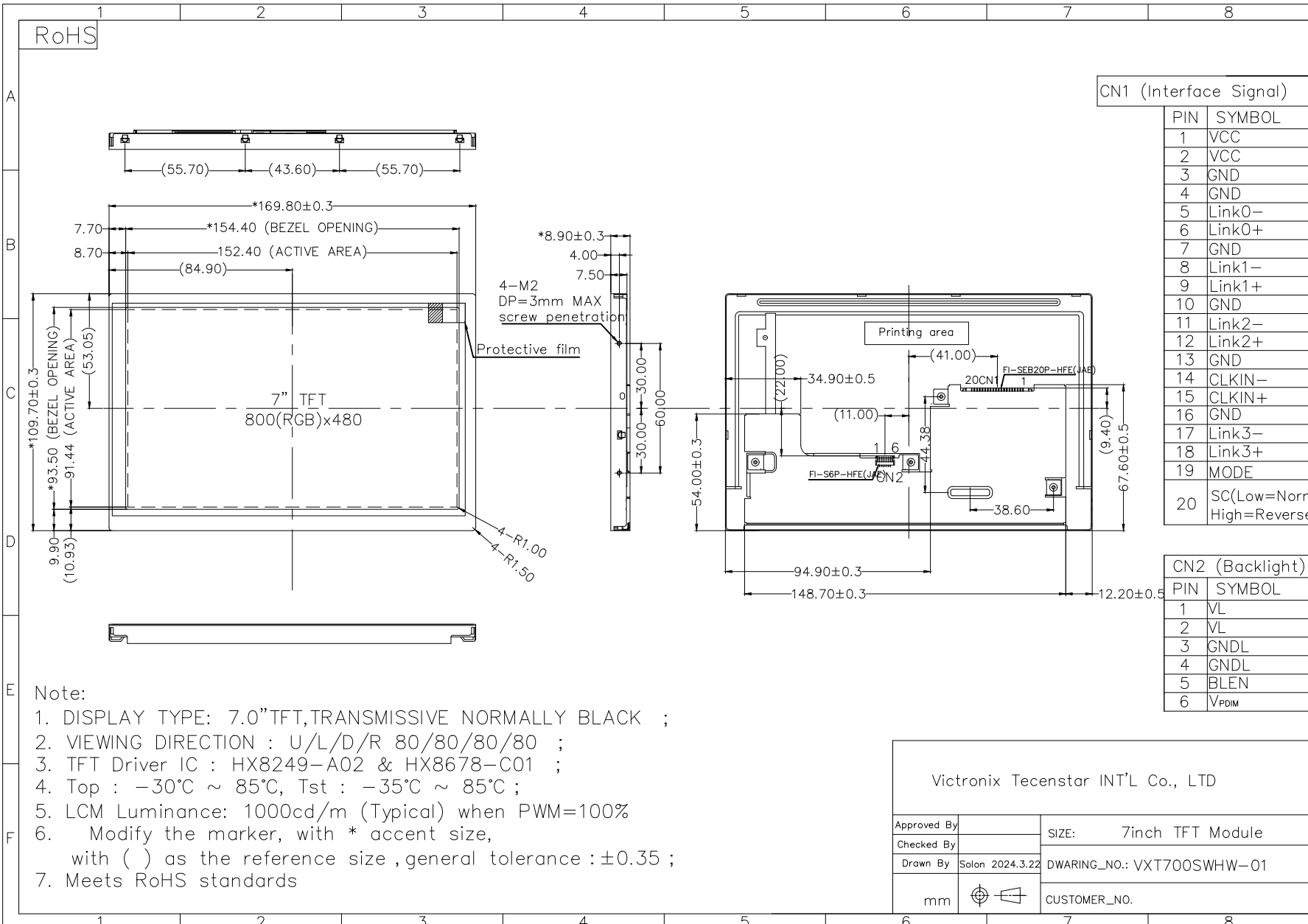


RoHS



CN1 (Interface Signal)

PIN	SYMBOL
1	VCC
2	VCC
3	GND
4	GND
5	Link0-
6	Link0+
7	GND
8	Link1-
9	Link1+
10	GND
11	Link2-
12	Link2+
13	GND
14	CLKIN-
15	CLKIN+
16	GND
17	Link3-
18	Link3+
19	MODE
20	SC(Low=Normal, High=Reverse)

CN2 (Backlight)

PIN	SYMBOL
1	VL
2	VL
3	GNDL
4	GNDL
5	BLDN
6	V _{PDIM}

- Note:
1. DISPLAY TYPE: 7.0" TFT, TRANSMISSIVE NORMALLY BLACK ;
 2. VIEWING DIRECTION : U/L/D/R 80/80/80/80 ;
 3. TFT Driver IC : HX8249-A02 & HX8678-C01 ;
 4. Top : -30°C ~ 85°C, Tst : -35°C ~ 85°C ;
 5. LCM Luminance: 1000cd/m (Typical) when PWM=100%
 6. Modify the marker, with * accent size, with () as the reference size , general tolerance : ±0.35 ;
 7. Meets RoHS standards

Victronix Tecenstar INT'L Co., LTD

Approved By		SIZE: 7inch TFT Module
Checked By		
Drawn By	Solon 2024.3.22	DWARING_NO.: VXT700SWHW-01
mm		CUSTOMER_NO.